

MSA Latchways Personal Rescue Device® (PRD®)

RH2 and RH3 Models



The integrity of Latchways products is defined by the following key criteria:

- **Smarter**—they are innovatively designed to achieve 100% performance reliability
- **Stronger**—they are manufactured using the highest grade materials
- **Safer**—they are fully tested in-house to exceed all required standards which is then verified by independent external test houses
- **The result**—better products



The Latchways **Personal Rescue Device**® (Latchways PRD®)

Latchways has revolutionised the rescue process with the development of the **Latchways PRD®**—an integrated harness system allowing self-rescue. The lightweight, unobtrusive rescue device is contained in a small ‘backpack’ attached to a full body harness and is designed to be used in conjunction with a fall protection system or anchor point.

In the event of a fall the **Latchways PRD®** harness suspends the user and then allows them to gently lower themselves to the ground in a controlled descent. The device features a 20 m spool of Aramid rope which is released at a controlled rate through an integral braking mechanism. The innovative design uses quality componentry and a limited number of moving parts to always ensure 100% mechanical integrity.



Key Facts

- Descent height: 20 m
- Complete weight: 3.6 kg - (1 kg harness/2.6 kg rescue device)
- User weight: 59 – 140 kg
- Descent speed: 0.5 – 2 m per second
- Secondary release mechanism: Should the user not be able to rescue themselves, the device can be activated by a third party
- Component parts: Descent line made from Aramid rope (UHMwPE rope with Aramid overbraid)
- Training: Minimal user training required—no annual user refresher training required
- Maintenance: Periodic examination limited to a series of visual inspections carried out by a competent person (full instructions provided)

The Latchways PRD® range



RH2



RH3

Rescue Pole

The Latchways Rescue Pole is designed to be used by a third party. Should the user be unable to conduct a self-rescue, the third party can activate the Latchways PRD®'s built-in secondary descent release mechanism. The overall length of the pole is 800 mm when retracted and 3400 mm when extended.



Ease of use

The patented Latchways componentry has been designed to fit neatly into the 'backpack' to ensure the worker can safely go about their daily work. The 'backpack' zips onto the harness so that it becomes part of everyday work wear for those who work at height. The harness is lightweight and unobtrusive but also robust, ensuring it can withstand the rigours of the harshest working environments.



Rescue Benefits

- Significantly reduces rescue time
- Always available
- Self-activated
- Intuitive use
- Clear rescue plan
- Improves user safety

Minimal training and fast rescue

User training

Unlike all other rescue kit, no specialist training is required as the Latchways PRD® is worn in place of a standard full body harness and activation is achieved by simply pulling the release cord.

Pre use checks

The Latchways PRD® has been designed to be user-friendly and as such pre-use checks are minimal. The descent device, harness and backpack should be checked for any signs of:

- use (a descent has been performed)
- damage
- corrosion
- chemical attack

Periodic examination is required at least annually or more frequently to adhere with corporate PPE inspection schedules.

Standards

The Latchways PRD® consists of a full body harness and integral descender device that conforms to all the required standards:

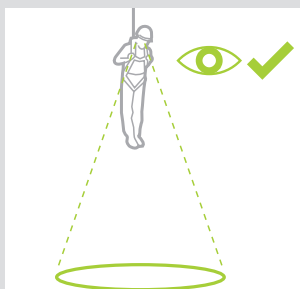
The harness conforms to EN361: 2002 and EN 358:1999 (depending on model).

The descender device conforms to: EN 341: 2011 Type 1, Class D

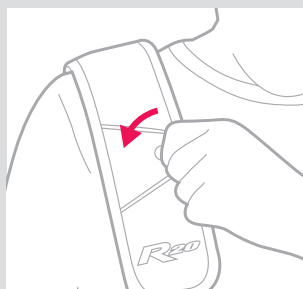
The 'backpack' and harness are:

- Waterproof and dustproof IP56 (Ingress Protection)
- -20°C to +60°C operating temperature
- Successfully assessed against EN 13463-1:2009 and EN 13463-5:2003 under ATEX category Ex II 2 G c IIC T3.

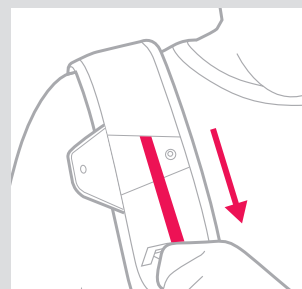
User instructions



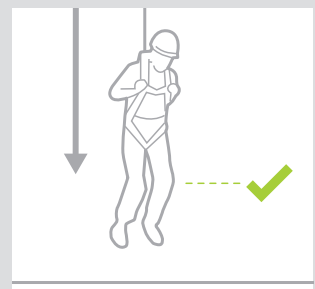
1 Check the ground below to ensure descent path is clear and a safe landing is possible.



2 Open the flap on the right shoulder strap to access the release cord.

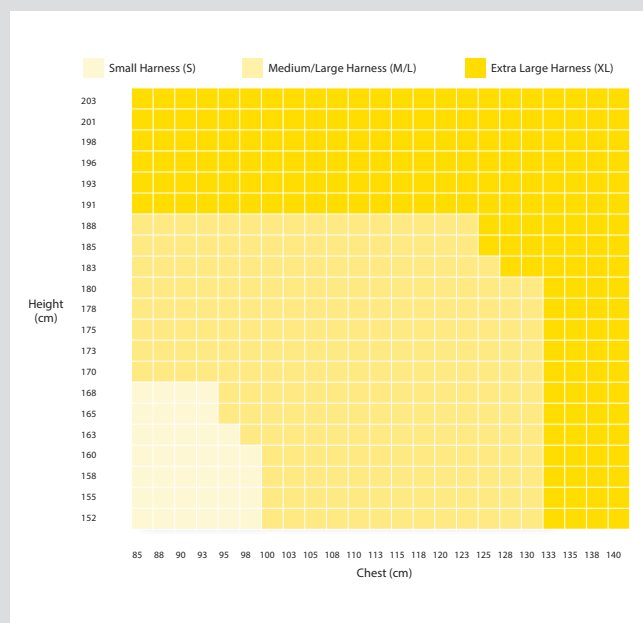


3 Pull sharply on the release cord.



4 Prepare for landing by bending knees.

Latchways PRD® Harness Sizing Guide

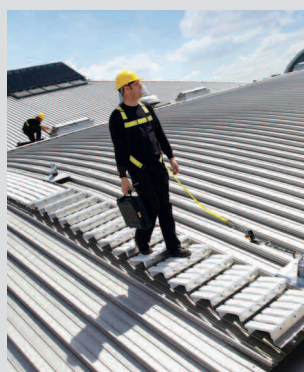


Ordering Information

Latchways Personal Rescue Device (PRD)	
68202-00S	Personal Rescue Device (RH2 Model) with Small Harness
68202-00L	Personal Rescue Device (RH2 Model) with Large Harness
68202-00XL	Personal Rescue Device (RH2 Model) with Extra Large Harness
68203-00S	Personal Rescue Device (RH3 Model) with Small Harness
68203-00L	Personal Rescue Device (RH3 Model) with Large Harness
68203-00XL	Personal Rescue Device (RH3 Model) with Extra Large Harness
68099-00	Rescue Pole

Latchways plc

All around the world, people work safely at height thanks to Latchways' fall protection systems. With over 35 years' experience at the cutting edge of fall protection Latchways set the standard for innovation, performance and quality. The versatility, dependability and ease of use of Latchways ManSafe® products is the reason they are trusted to ensure worker safety on a wide range of applications, protecting people as they go about day-to-day activities such as maintenance, cleaning, and inspection.



Your direct contact

