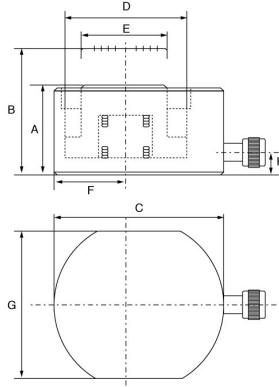


Low Profile Pad Cylinder – TSLC Series



TECPOS

- Maximum Pressure: 700 Bar.
- Hydraulic Coupler: TBC 381F(PT3/8).
- Orange painted finish.
- Single acting spring return.
- Low profile cylinders are designed for use where there is a minimum of clearance for insertion of Cylinders.
- Marked with CE, capacity, manufacturers ID, product ID mark and traceability code.
- Certs available **2.1** **DoC**

| Product Code | Cyl. Cap. | Stroke | Cyl. Effective Area | Oil Cap. | Retracted Height | Extended Height | Cyl. Out Dia. | Cyl. Bore Dia. |
|--------------|-----------|--------|---------------------|----------|------------------|-----------------|---------------|----------------|
| | t | mm | cm ² | cc | A mm | B mm | C mm | D mm |
| TSLC56 | 5 | 6 | 6.16 | 3.7 | 40 | 46 | 60 | 28 |
| TSLC1011 | 10 | 11 | 15.2 | 16 | 45 | 56 | 85 | 44 |
| TSLC2011 | 20 | 11 | 28.3 | 31 | 52 | 63 | 102 | 60 |

| Product Code | Cyl. Cap. | Stroke | Cyl. Effective Area | Oil Cap. | Retracted Height | Extended Height | Cyl. Out Dia. | Cyl. Bore Dia. |
|--------------|-----------|--------|---------------------|----------|------------------|-----------------|---------------|----------------|
| | t | mm | cm ² | cc | A mm | B mm | C mm | D mm |
| TSLC3013 | 30 | 13 | 41.85 | 53 | 59 | 72 | 115 | 73 |
| TSLC5016 | 50 | 16 | 60.8 | 99 | 67 | 83 | 139 | 88 |
| TSLC7516 | 75 | 16 | 103.87 | 164 | 79 | 95 | 165 | 115 |
| TSLC10016 | 100 | 16 | 126.7 | 203 | 86 | 102 | 180 | 127 |
| TSLC15016 | 150 | 16 | 201 | 317 | 100 | 116 | 215 | 160 |

| Product Code | Cyl. Cap. | Stroke | Piston Rod Dia. | Plunger to Base | Cylinder Dims | Base to inlet port | Weight | Pump |
|--------------|-----------|--------|-----------------|-----------------|---------------|--------------------|--------|----------|
| | t | mm | E mm | F mm | G mm | H mm | kgs | |
| TSLC56 | 5 | 6 | 25 | 22 | 42 | 21 | 0.8 | 1B or 08 |
| TSLC1011 | 10 | 11 | 38 | 29 | 56 | 21 | 1.5 | 1B or 08 |
| TSLC2011 | 20 | 11 | 54 | 42 | 76 | 21 | 2.7 | 1B or 08 |
| TSLC3013 | 30 | 13 | 64 | 48 | 95 | 21 | 4.2 | 1B or 08 |
| TSLC5016 | 50 | 16 | 75 | 58 | 114 | 21 | 6.9 | 1C or 17 |
| TSLC7516 | 75 | 16 | 85 | 70 | 140 | 21 | 11 | 1C or 17 |
| TSLC10016 | 100 | 16 | 95 | 78 | 152 | 25 | 14.7 | 1C or 17 |
| TSLC15016 | 150 | 16 | 115 | 97 | 190 | 24 | 25 | 1C or 17 |