



Sophia Hi-Vis Lightweight Jacket

The Sophia Hi-Vis Lightweight Jacket is perfect for layering up in changeable weather conditions. With EN 343 class 4 water resistance and angled torso retro reflective tape, this jacket keeps you safe and dry. A toggled adjustable hem and side panelling provides a fitted shape for added comfort and style, making this lightweight jacket a wardrobe essential for work.

Features

- EN ISO 20471 Class 3
- RIS-3279-TOM (Orange only)
- EN 343 Class 4:1:X
- 2 band & brace
- Concealed storm flap with two-way zip
- Angled hi-vis bands on the front
- Adjustable velcro cuffs
- 2 concealed zipped front pockets
- Inner chest pocket
- Concealed detachable hood with drawstring
- Toggled adjustable hem
- Flattering fit

Fabric

- Main - 300 Denier Oxford PU fabric
- Lining - Mesh

Applications

Tasks with a hi-vis requirement – traffic, security, event marshalling, driving, construction, roadworks, wet weather tasks.
Rail/underground (Orange version only)

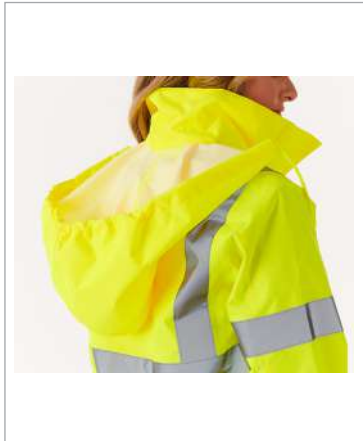
Packaging

1 piece per bag - 10 bags per case

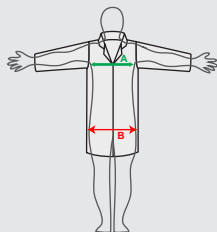
Product Code		
SHV-L05241-8	8 - 22	NEW! Sophia Lightweight Jacket - Yellow
SHV-L05281-8	8 - 22	NEW! Sophia Lightweight Jacket - Orange

Washcare Symbols				
Wash cycle	Do not bleach	Do not tumble dry	Do not iron	Do not dry clean

Standards			
PPE Regulation (EU) 2016/425 as retained in the UK and amended. EN ISO 20471:2013+A1:2016- High Visibility Warning Clothing for Professional Use RIS-3279-TOM - Rail Industry Standard (Orange Garment Only) EN 343:2019			



Size Chart



Measurements in cm	8	10	12	14	16	18	20	22
To fit (A)	88 - 92	92 - 96	96 - 100	100 - 104	104 - 108	108 - 112	112 - 116	116 - 120
To fit (B)	99 - 103	103 - 107	107 - 111	111 - 115	115 - 119	119 - 123	123 - 127	127 - 131