

PR671 Women's Long Sleeve Chef's Jacket

Description

This long sleeve jacket is designed for women and offers a neater fit around the upper arm, waist and bust areas. A wrap-over style with a ten button fastening at the front, together with a useful pen pocket on the upper left arm.

Product Features:

- Ten button hole wrap over fastening
- Pen pocket on left sleeve
- Panelled back for a more fitted style
- Mandarin collar

Available In:

XS, S, M, L, XL, 2XL

Certifications:

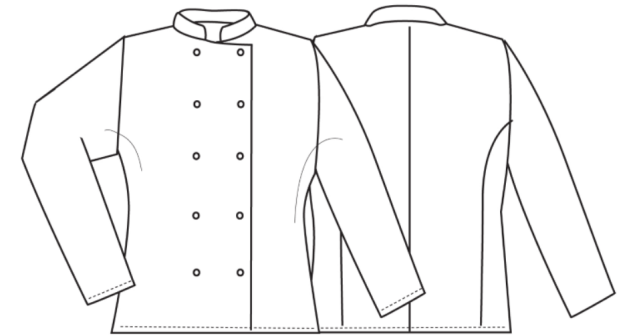


Colours:

Colour	Pantone	C	M	Y	K
White	White	0	0	0	0

Fabric:

65% Polyester, 35% Cotton Twill, 195gsm.



Suggested Decoration:

Screen Print, Transfer Print, Embroidery

Country of Origin:

Bangladesh

Commodity Code:

6211 43 1000

Features:



Wash Care:



Carton Information:

Sizes	Carton	Pack	SKU's	Carton Weight	Carton Dimensions
All Sizes	24	6	6	8kg approx.	60cmx40cmx22cm

Garment Sizes:

Size	8	10	12	14	16	18
Bust to fit"	33	35	37	39	41	43
Bust to fit cm	84	89	94	99	104	109
Bust actual cm	94	99	104	109	114	120
Call size	XS	S	M	L	XL	2XL
Back length cm	76	76	76	76	76	76