



Kamela Hi-Vis Padded Jacket

Stay safe and warm, without compromising on style while you work with the Kamela Hi-Vis Padded Jacket. The water-resistant outer shell protects you from the elements while the padded design provides extra comfort and warmth. Adjustable cuffs and waist ensure a comfortable fit and with multiple pockets for storage, in this jacket you'll be ready for just about anything.

Features

- EN ISO 20471 Class 3
- RIS-3279-TOM (Orange only)
- EN 343 Class 4:1:X
- 2 Band & brace
- Concealed storm flap with two-way zip
- Angled hi-vis bands on the front
- Adjustable velcro cuffs
- 2 concealed side zipped pockets
- 1 concealed zip pocket on sleeve
- Inner chest pocket
- Concealed detachable hood with drawstring
- Swept dropped hem
- Flattering fit

Fabric

- Main - 300 Denier Oxford PU fabric
- Polyester quilted lining

Applications

Tasks with a hi-vis requirement – traffic, security, event marshalling, driving, construction, roadworks, wet weather tasks.

Rail/underground (Orange version only)

Packaging

1 piece per bag - 10 bags per case

Product Code

SHV-L05141-8	8 - 22	NEW! Kamela Padded Jacket - Yellow
SHV-L05181-8	8 - 22	NEW! Kamela Padded Jacket - Orange

Washcare Symbols



Wash cycle



Do not bleach



Do not tumble dry



Do not iron



Do not dry clean

Standards



EN ISO 20471:
2013+A1:2016



RIS-3279-TOM



EN 343:2019



PPE Regulation (EU) 2016/425 as retained in the UK and amended.

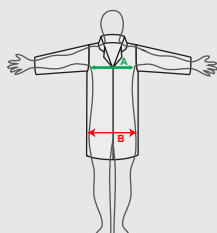
EN ISO 20471:2013+A1:2016- High Visibility Warning Clothing for Professional Use

RIS-3279-TOM - Rail Industry Standard (Orange Garment Only)

EN 343:2019



Size Chart



Measurements in cm	8	10	12	14	16	18	20	22
To fit (A)	88 - 92	92 - 96	96 - 100	100 - 104	104 - 108	108 - 112	112 - 116	116 - 120
To fit (B)	99 - 103	103 - 107	107 - 111	111 - 115	115 - 119	119 - 123	123 - 127	127 - 131

Issue No.: 2

Issue Date: 06.08.2024