



Jaya Hi-Vis Bird Eye Polo Shirt Long Sleeves

Be seen, comfortable and stylish with the Jaya Hi-Vis Bird Eye Long Sleeve Polo. Designed with tapered side seams for a flattering shape and tight, soft ribbed cuffs for added comfort, this shirt is the perfect choice for any woman who demands both style and functionality. With UPF40+ protection and breathable fabric, you can stay cool and protected from the sun's harmful rays while you work. Choose the Jaya Hi-Vis Bird Eye Long Sleeve Polo for a smart and functional addition to your workwear wardrobe.

Features

- EN ISO 20471 Class 2 (Sizes 8 - 14)
- EN ISO 20471 Class 3 (Sizes 16 - 22)
- RIS-3279-TOM (Orange only)
- Tested against BS EN 13758-1:2001+A1:2006
- UPF 40+ rating for protection against harmful UV rays
- 2 band & brace
- Side vent detail
- Breathable fabric
- Heat applied segmented tape for better stretch
- Shaped side seams for a fitted waist

Fabric

- Main - 100% Polyester Bird Eye Fabric

Applications

Tasks with a hi-vis requirement – traffic, security, event marshalling, driving, construction, roadworks, rail/underground (Orange version only)

Packaging

1 piece per bag - 20 bags per case

Product Code

| | | |
|--------------|--------|---|
| SHV-L30141-8 | 8 - 22 | NEW! Jaya Hi-Vis Polo Shirt Long Sleeves - Yellow |
| SHV-L30181-8 | 8 - 22 | NEW! Jaya Hi-Vis Polo Shirt Long Sleeves - Orange |

Washcare Symbols



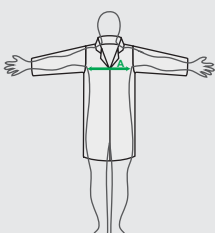
Standards



PPE Regulation (EU) 2016/425 as retained in the UK and amended.
EN ISO 20471:2013+A1:2016- High Visibility Warning Clothing for Professional Use
RIS-3279-TOM - Rail Industry Standard (Orange Garment Only)



Size Chart



| Measurements in cm | 8 | 10 | 12 | 14 | 16 | 18 | 20 | 22 |
|--------------------|---------|---------|----------|-----------|-----------|-----------|-----------|-----------|
| To fit (A) | 88 - 92 | 92 - 96 | 96 - 100 | 100 - 104 | 104 - 108 | 108 - 112 | 112 - 116 | 116 - 120 |