



INSTRUCTION MANUAL
PLEASE RETAIN

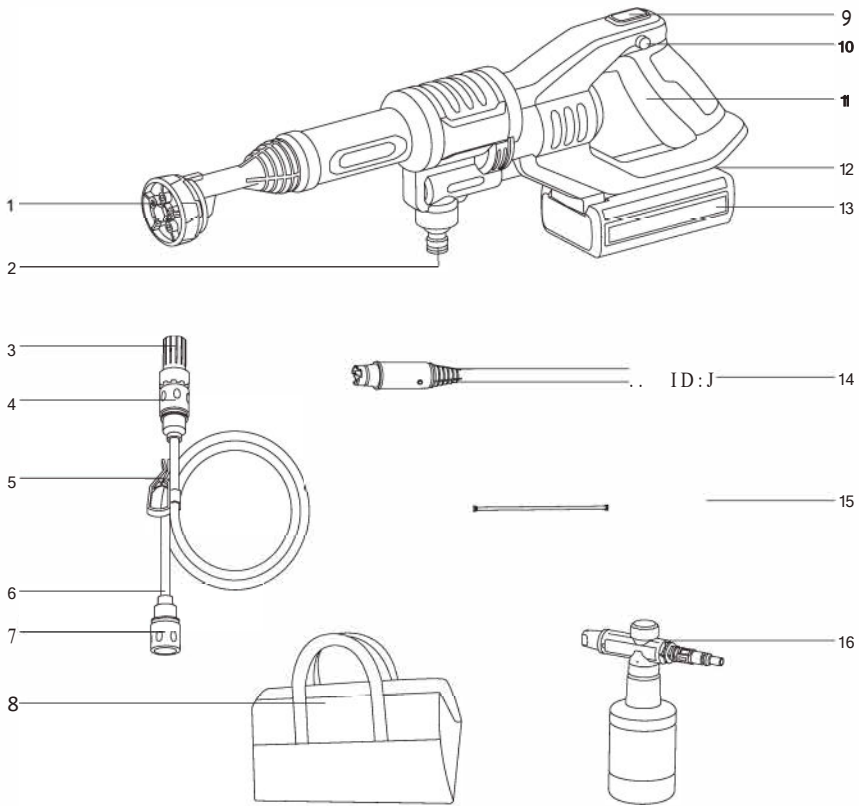
DO NOT USE THIS APPLIANCE
WITHOUT READING THIS FIRST



RS180i

CORDLESS PRESSURE WASHER

Part List



1	Multi-spray nozzle	9	Pressure setting switch
2	Hose adapter	10	Lock off switch
3	Hose filter	11	On/off switch lever
4	Hose connector	12	Battery Pack release button
5	Hose clip	13	Battery Pack
6	Hose	14	Extension lance
7	Hose connector	15	Charger
8	Carry bag	16	Soap bottle

Product Safety General Safety Warnings

Warning: Read all safety warnings and all instructions. Failure to follow the warnings and instructions may result in electric shock, fire and/or serious injury.

Do not expose this appliance to heat or fire.

Do not expose the battery pack to heat or fire. Avoid storage in direct sunlight.

Do not subject battery pack to mechanical shock.

Do not short-circuit a battery pack. Do not store battery packs haphazardly in a box or drawer where they may short-circuit each other or be short-circuited by other metal objects.

Do not disassemble or open the battery pack.

Keep the battery pack out of the reach of children.

Do not maintain battery pack on charge when not in use.

If battery pack is not used for a long time, charge it every three months.

After extended periods of storage, it may be necessary to charge and discharge the battery pack several times to obtain maximum performance.

Check whether charger is in good condition before charging.

Do not use any charger other than that specifically provided for use with the equipment.

Battery pack gives its best performance when it is operated at normal room temperature(20 C+/-5

Waste battery pack should be recycled separately. Do not throw it into general waste.

Do not charge in high temperatures.

Only charge indoors. Do not expose battery pack to water or rain.

The appliance will be dangerous if it is not used properly. The spray nozzle should not be directed at persons, electrical equipment or the appliance itself.

During use, do not change the spray mode.

This appliance should not be used by children or persons with reduced physical or mental capabilities.

The appliance is not to be used if it has been dropped, if there are visible signs of damage or if it is leaking.

Wipe the appliance with a clean dry cloth if it becomes dirty. Do not use water, petrol or alcohol to clean it.

Keep the appliance out of reach of children when it is energized.

Clean hose connector filter and hose filter regularly.

If power cord is damaged, to avoid danger, send it to professional agent to replace.

Remove or disconnect the battery pack after use and before carrying out user maintenance on the appliance.

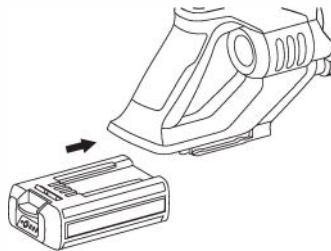
The appliance should not be left unattended while it is connected to the battery pack.

Appliance assembly

1.Install battery pack

Take out battery pack, aim at the slot under machine handle, slide in until battery pack is locked.

Note: Keep battery pack away from water during assembly.

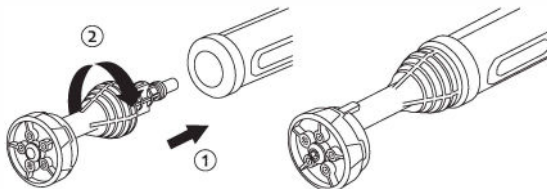


2.Install multi-spray nozzle and extension lance.

Note: The appliance is equipped with multi-spray nozzle and extension lance for multiple uses.

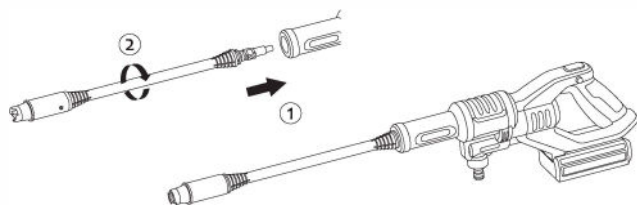
2-1.Install multi-spray nozzle

Insert the multi-spray nozzle in to the power nozzle connector and press it tightly and rotate multi-spray nozzle in the direction of the arrow until it is locked.

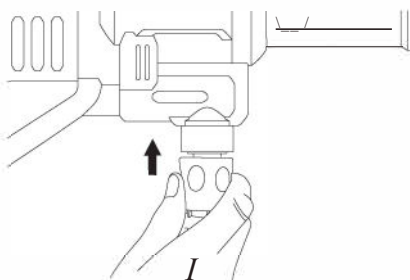


2-2. Install extension lance.

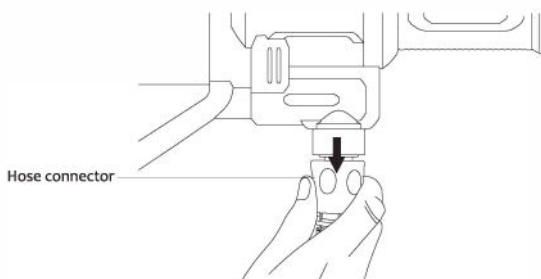
Insert extension lance into power nozzle connector and press it tightly as below, and rotate extension lance in the direction shown until it is locked.



3-1. Install hose. Hold hose connector and insert into hose adaptor until a "click" sound is heard.



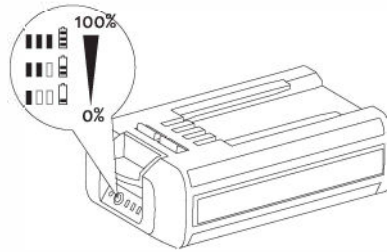
3-2. Disconnect hose: Hold hose connector, pull it away from hose adaptor.



Product Operation

1. Charging

Before using the appliance, press battery pack power indicator to check power condition.

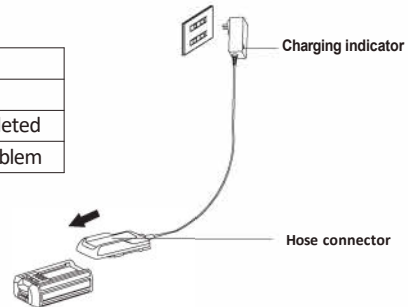


If there is not enough power, charge battery pack only with the charger that is specified for this equipment.

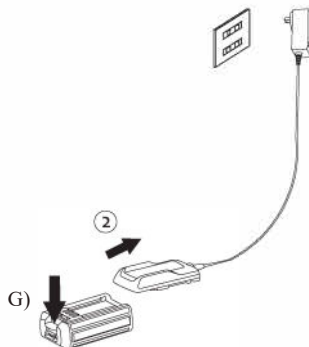
1)Align the charger adaptor with the battery pack slot and slide in until is locked. Start charging the battery pack.

Note: Check charging indicator colour to confirm charging status.

Indicator colour	Status
Red light on	Under charging
Green light on	Charging completed
Red light blinks	Battery has problem



2)After charging is completed, remove charger from power socket. Press battery pack release button and remove battery pack from charger adaptor.



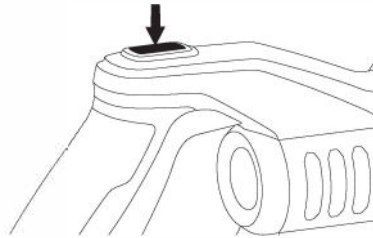
Note:

- 1) Battery pack is not shipped fully charged. Please charge the battery pack fully before using.
- 2) Charge pack is not waterproof, charge the battery pack in dry place. The charging time takes around 2.5 Hours.
- 3) During use of the equipment, when machine indicator blinks, it means there is not enough power. Charge the battery pack immediately.
- 4) When there is not enough power, to protect the battery pack, the equipment will turn off automatically.

2.Operation

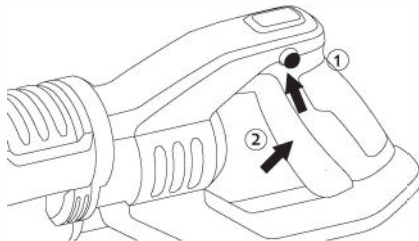
2-1.Setting option

This equipment has two pressure modes: ECO and MAX. Press pressure mode button to switch between modes. Pressure setting indicator is on, the equipment is in ECO mode, if the indicator is off, the equipment is in MAX mode. It is suggested to use MAX mode to start & prime the device before switching over to ECO mode when the spray is flowing.



2-2.Start using

Press lock off switch (1), then press on/off switch lever (2) to start using the equipment.

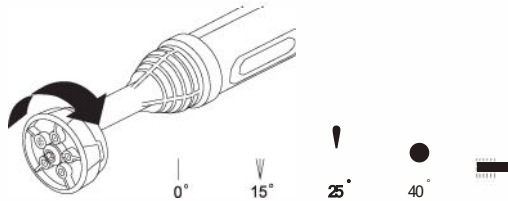


2-3.Choose water spray pattern

Multi-spray nozzle: There are 5 spray patterns, choose the most suitable nozzle pattern according to your work. The 5th spray pattern with the symbol is best for watering or showering. Rotate the nozzle ring to choose suitable spray pattern.

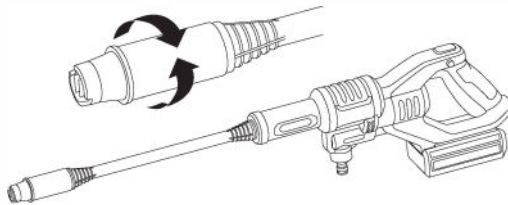
Note:

- 1) Do not shift the nozzle pattern when the tool is powered on. Turn off the equipment and choose the pattern and then turn on again.
- 2) Do not target the nozzle at self or another person during use.



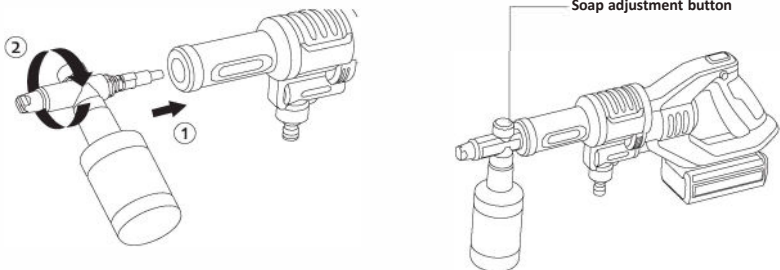
Extension lance: Extension lance can spray water in strict pattern or fan-shaped pattern. Rotate the ring in top of extension lance to choose suitable spray pattern.

Note: Do not target the nozzle at self or another person during use.



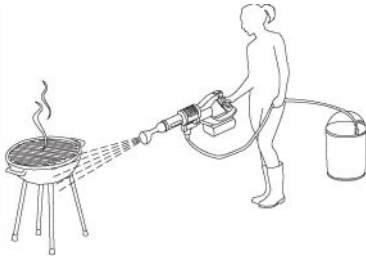
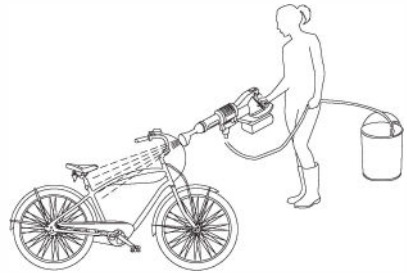
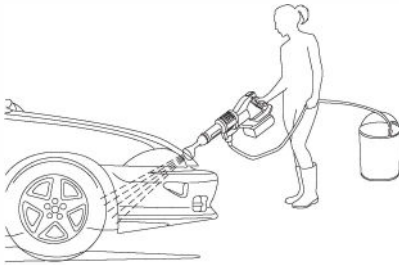
2-4. Use of soap bottle

The Soap bottle provides detergent suds for deeper cleaning of dirt. It is used in conjunction with the power nozzle or extension lance. Connect soap bottle as shown below and turn on the equipment to spray soap bubbles. Soap quantity can be adjusted by rotating the knob on top of soap bottle.



2-5.Functions

The equipment can be used for multiple functions: Washing cars, bikes, road, barbecue oven and watering flowers etc...

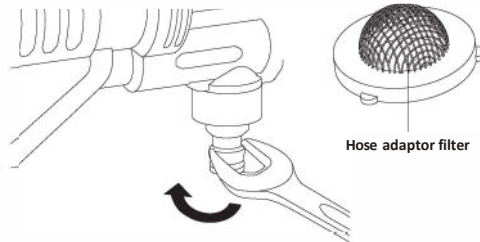


3.Product cleaning and maintenance

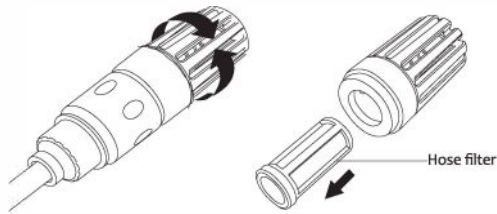
Note: Remove battery before cleaning the equipment.

3-1.Clean hose adapter filters regularly to avoid blocking water inlet.

Use a wrench to disconnect the hose adapter and remove filter to clean it.



3-2. Clean hose filter regularly to avoid blocking hose inlet.
 Rotate hose filter cover to detach from hose, take out the hose filter and clean it.



4.Storage

Before storage, completely drain all the water from the machine and hose. Remove battery pack and multi-spray nozzle/extension lance and hose.

Note:

- 1)Store battery pack separately in a dry place. Do not store it in a car or hot place.
- 2)Store the equipment in a dry place out of the reach of children.

Trouble Shooting

Symptom	Possible cause	Solution
ECO light blinks	Battery pack is empty	Recharge the battery pack
Machine does not start	Battery pack is empty	Recharge the battery pack
Machine stops automatically	Machine temperature is too high	Turn off machine and wait until the machine is cooled down to turn it on
Battery pack cannot charge	Battery pack is not inserted in charger completely	Reinstall battery pack into charge connector
	Charger is not plugged in	Make sure charger is plugged in and the indicator on the charger is on
Machine sprays little water	Filter is blocked	Clean hose filter and hose adaptor filter
	Hose is tangled	Replace hose or straighten out the hose
	Too many impurities in water	Change to clean water

Machine does not draw any water	Hose adapter loose	Tighten the hose adapter
	Not well connected to the machine	Tighten the hose adapter securely
	Hose filter is not completely inserted into water	Insert hose filter into water completely
Machine takes long time to draw water	Machine is in ECO mode	Switch to MAX mode
Multi-spray nozzle connector leaking water	Multi-spray nozzle loose	Insert multi-spray nozzle to the end and rotate it to fix
Multi-spray nozzle leaking water	Multi-spray nozzle is not rotated to right position	Rotate the multi-spray nozzle until the water shape mark is aligned with arrow

Technical Data

Model		RS180i
Charger voltage		100V-240V-50/60Hz
Charging current		1000 mA
Charging time		Around 2.5h
Voltage		20VMax = =
Pressure	Max mode	2.2MPa
	Eco mode	0.8MPa
Max. water flow rate		3L/min
Max. inlet water pressure		0.5MPa
Suction height		Max1.8m
Machine weight(with battery)		1.8kg

Packing list

hose	multi-spray nozzle	extension lance	soap bottle
1	1	1	1
Carry bag	Battery pack	Charger	Cleaner
1	1	1	1

Disposal

The machine, accessories and packaging should be sorted for environmental-friendly recycling.

Do not dispose of the machine into household waste!

Only for EC countries

According to the European Guideline 2012/19/EU, machines that are no longer usable, and according to the European Guideline 2006/66/EC, defective or used battery packs/batteries, must be collected separately and disposed of in an environmentally correct manner.

Battery packs/batteries

Integrated batteries may only be removed for disposal by qualified personnel.

Opening the housing shell can damage or destroy the machine.

Do not dispose of battery packs/batteries into household waste, fire or water. Battery packs/batteries should, if possible, be discharged, collected, recycled or disposed of in an environmentally friendly manner.

Subject to change without notice.

Warranty Information

This product enjoys one year warranty for the machine and 6 months warranty for the battery service starting from the date of purchase.

Excluded from the guarantee is normal wear, commercial use, alterations to the appliance as purchased, cleaning activities, consequences of improper use or damage by the purchaser or a third person, damage, that can be attributed to external circumstances or caused by the batteries.