

## XRF Screening and Chemical Confirmation Test Report

Number: 210200323HZH-002

Supplier: Bower Products Ltd.

Date: 2021-04-20

### Sample Description:

One (1) piece of submitted sample :  
 said to be :  
 Item Name : Fluorescent lamp  
 Testing Models : T4 2Π  
 Brand name : Excellight  
 Reference Models : T5,T8,T9,PLS,PLL,FUL



### Tests Conducted:

As Requested By The Applicant, For Details Refer To Attached Page(S)

### Conclusion:

<u>Tested sample</u>	<u>Standard</u>	<u>Result</u>
Tested component of Submitted sample	Screening by XRF spectroscopy and chemical confirmation test for RoHS Directive 2011/65/EU and amendment (EU)2015/863	Pass

To be continued

Authorized By:  
 For Intertek Testing Services Ltd., Shanghai, Hangzhou Branch

Patrick Chen  
 Manager

**XRF Screening and Chemical Confirmation Test Report**

Number: 210200323HZH-002

**Tests Conducted**

Cadmium (Cd), Lead (Pb), Mercury (Hg), Chromium (Cr) and bromine (Br) content were measured with reference to IEC 62321-3-1 Edition 1.0:2013 by XRF spectroscopy and chemical confirmation test for RoHS restricted substances. And Polybrominated Biphenyls (PBBs), Polybrominated Diphenyl Ethers (PBDEs) and Phthalates content were determined by Gas Chromatographic-Mass Spectrometric (GC-MS).

**(A) Results:**

Part No.	Tested Components	Refer information	Restricted Substance	XRF Result	Screened Results (BLphthalates)	Chemical Confirmation Result	Conclusion on RoHS
1	SCREW (SILVER METAL)	/	Cd	P	NA	/	PASS
			Pb	P		/	
			Hg	P		/	
			Cr	P		/	
			Br	NA		/	
			DEHP	NA	NA	/	
			BBP	NA	NA	/	
			DBP	NA	NA	/	
			DIBP	NA	NA	/	
2	HOLDER (WHITE PLASTIC)	/	Cd	P	NA	/	PASS
			Pb	P		/	
			Hg	P		/	
			Cr	P		/	
			Br	X		PBBs=ND PBDEs=ND	
			DEHP	NA	BL	/	
			BBP	NA	BL	/	
			DBP	NA	BL	/	
			DIBP	NA	BL	/	
3	FILLET OF SCREW (SILVER METAL)	/	Cd	P	NA	/	PASS
			Pb	P		/	
			Hg	P		/	
			Cr	P		/	
			Br	NA		/	
			DEHP	NA	NA	/	
			BBP	NA	NA	/	
			DBP	NA	NA	/	
			DIBP	NA	NA	/	
4	COVER (WHITE PLASTIC)	/	Cd	P	NA	/	PASS
			Pb	P		/	
			Hg	P		/	
			Cr	P		/	
			Br	X		PBBs=ND PBDE=245ppm	

**XRF Screening and Chemical Confirmation Test Report**

Number: 210200323HZH-002

Part No.	Tested Components	Refer information	Restricted Substance	XRF Result	Screened Results (BLphthalates)	Chemical Confirmation Result	Conclusion on RoHS
			DEHP	NA	BL	/	
			BBP	NA	BL	/	
			DBP	NA	BL	/	
			DIBP	NA	BL	/	
5	RESISTOR						
5-1	LEAD SKIN (BLACK NONMETAL)	/	Cd	P	NA	/	PASS
			Pb	P		/	
			Hg	P		/	
			Cr	P		/	
			Br	P		/	
			DEHP	NA	BL	/	
			BBP	NA	BL	/	
			DBP	NA	BL	/	
			DIBP	NA	BL	/	
5-2	RESISTOR	/	Cd	P	NA	/	PASS
			Pb	P		/	
			Hg	P		/	
			Cr	P		/	
			Br	P		/	
			DEHP	NA	BL	/	
			BBP	NA	BL	/	
			DBP	NA	BL	/	
			DIBP	NA	BL	/	
6	WIRE						
6-1	LEAD SKIN (WHITE NONMETAL)	/	Cd	P	NA	/	PASS
			Pb	P		/	
			Hg	P		/	
			Cr	P		/	
			Br	P		/	
			DEHP	NA	X	147ppm	
			BBP	NA	BL	/	
			DBP	NA	BL	/	
			DIBP	NA	BL	/	
6-2	WIRE (SILVER METAL)	/	Cd	P	NA	/	PASS
			Pb	P		/	
			Hg	P		/	
			Cr	P		/	
			Br	NA		/	
			DEHP	NA	NA	/	



**XRF Screening and Chemical Confirmation Test Report**

Number: 210200323HZH-002

Part No.	Tested Components	Refer information	Restricted Substance	XRF Result	Screened Results (BLphthalates)	Chemical Confirmation Result	Conclusion on RoHS
			BBP	NA	NA	/	
			DBP	NA	NA	/	
			DIBP	NA	NA	/	
7	PCB						
7-1	LEAD (GUN-METAL SILVER METAL)	/	Cd	P	NA	/	PASS
			Pb	P		/	
			Hg	P		/	
			Cr	P		/	
			Br	NA		/	
			DEHP	NA	NA	/	
			BBP	NA	NA	/	
			DBP	NA	NA	/	
			DIBP	NA	NA	/	
7-2	CAPACITOR	/	Cd	P	NA	/	PASS
			Pb	P		/	
			Hg	P		/	
			Cr	P		/	
			Br	P		/	
			DEHP	NA	BL	/	
			BBP	NA	BL	/	
			DBP	NA	BL	/	
			DIBP	NA	BL	/	
7-3	CAPACITOR	/	Cd	P	NA	/	PASS
			Pb	P		/	
			Hg	P		/	
			Cr	P		/	
			Br	P		/	
			DEHP	NA	BL	/	
			BBP	NA	BL	/	
			DBP	NA	BL	/	
			DIBP	NA	BL	/	
7-4	CAPACITOR	/	Cd	P	NA	/	PASS
			Pb	P		/	
			Hg	P		/	
			Cr	P		/	
			Br	P		/	
			DEHP	NA	BL	/	
			BBP	NA	BL	/	
			DBP	NA	BL	/	





**XRF Screening and Chemical Confirmation Test Report**

Number: 210200323HZH-002

Part No.	Tested Components	Refer information	Restricted Substance	XRF Result	Screened Results (BLphthalate s)	Chemical Confirmation Result	Conclusion on RoHS
			DIBP	NA	BL	/	
7-5	LEAD SKIN (WHITE NONMETAL)	/	Cd	P	NA	/	PASS
			Pb	P		/	
			Hg	P		/	
			Cr	P		/	
			Br	P		/	
			DEHP	NA	BL	/	
			BBP	NA	BL	/	
			DBP	NA	BL	/	
			DIBP	NA	BL	/	
7-6	INDUCTOR						
7-6-1	WIRE (RED METAL)	/	Cd	P	NA	/	PASS
			Pb	P		/	
			Hg	P		/	
			Cr	P		/	
			Br	NA		/	
			DEHP	NA	NA	/	
			BBP	NA	NA	/	
			DBP	NA	NA	/	
			DIBP	NA	NA	/	
7-6-2	WIRE (COPPER METAL)	/	Cd	P	NA	/	PASS
			Pb	P		/	
			Hg	P		/	
			Cr	P		/	
			Br	NA		/	
			DEHP	NA	NA	/	
			BBP	NA	NA	/	
			DBP	NA	NA	/	
			DIBP	NA	NA	/	
7-6-3	IRON CORE (BLUE METAL)	/	Cd	P	NA	/	PASS
			Pb	P		/	
			Hg	P		/	
			Cr	P		/	
			Br	NA		/	
			DEHP	NA	NA	/	
			BBP	NA	NA	/	
			DBP	NA	NA	/	
			DIBP	NA	NA	/	
7-7	TRIODE	/	Cd	P	NA	/	PASS

**XRF Screening and Chemical Confirmation Test Report**

Number: 210200323HZH-002

Part No.	Tested Components	Refer information	Restricted Substance	XRF Result	Screened Results (BLphthalate s)	Chemical Confirmation Result	Conclusion on RoHS
			Pb	P		/	
			Hg	P		/	
			Cr	P		/	
			Br	X		PBBs=ND PBDEs=ND	
			DEHP	NA	BL	/	
			BBP	NA	BL	/	
			DBP	NA	BL	/	
			DIBP	NA	BL	/	
7-8	COIL						
7-8-1	COVERING (BLACK NONMETAL)	/	Cd	P	NA	/	PASS
			Pb	P		/	
			Hg	P		/	
			Cr	P		/	
			Br	P	/		
			DEHP	NA	BL	/	
			BBP	NA	BL	/	
			DBP	NA	BL	/	
DIBP	NA	BL	/				
7-8-2	WIRE (COPPER METAL)	/	Cd	P	NA	/	PASS
			Pb	P		/	
			Hg	P		/	
			Cr	P		/	
			Br	NA	/		
			DEHP	NA	NA	/	
			BBP	NA	NA	/	
			DBP	NA	NA	/	
DIBP	NA	NA	/				
7-8-3	IRON CORE (BLACK METAL)	/	Cd	P	NA	/	PASS
			Pb	P		/	
			Hg	P		/	
			Cr	P		/	
			Br	NA	/		
			DEHP	NA	NA	/	
			BBP	NA	NA	/	
			DBP	NA	NA	/	
DIBP	NA	NA	/				
7-9	INDUCTOR						
7-9-1		/	Cd	P	NA	/	PASS
			Pb	P		/	

**XRF Screening and Chemical Confirmation Test Report**

Number: 210200323HZH-002

Part No.	Tested Components	Refer information	Restricted Substance	XRF Result	Screened Results (BLphthalates)	Chemical Confirmation Result	Conclusion on RoHS
	TAPE (RED NONMETAL)		Hg	P		/	
			Cr	P		/	
			Br	P		/	
			DEHP	NA	BL	/	
			BBP	NA	BL	/	
			DBP	NA	BL	/	
			DIBP	NA	BL	/	
7-9-2	IRON CORE (BLACK METAL)	/	Cd	P	NA	/	PASS
			Pb	P		/	
			Hg	P		/	
			Cr	P		/	
			Br	NA		/	
			DEHP	NA	NA	/	
			BBP	NA	NA	/	
			DBP	NA	NA	/	
7-9-3	WIRE (COPPER METAL)	/	Cd	P	NA	/	PASS
			Pb	P		/	
			Hg	P		/	
			Cr	P		/	
			Br	NA		/	
			DEHP	NA	NA	/	
			BBP	NA	NA	/	
			DBP	NA	NA	/	
7-9-4	HOLDER (BLACK PLASTIC)	/	Cd	P	NA	/	PASS
			Pb	P		/	
			Hg	P		/	
			Cr	P		/	
			Br	P		/	
			DEHP	NA	BL	/	
			BBP	NA	BL	/	
			DBP	NA	BL	/	
7-10	TRIODE	/	Cd	P	NA	/	PASS
			Pb	P		/	
			Hg	P		/	
			Cr	P		/	
			Br	X		PBBs=ND PBDEs=ND	

**XRF Screening and Chemical Confirmation Test Report**

Number: 210200323HZH-002

Part No.	Tested Components	Refer information	Restricted Substance	XRF Result	Screened Results (BLphthalates)	Chemical Confirmation Result	Conclusion on RoHS
			DEHP	NA	BL	/	
			BBP	NA	BL	/	
			DBP	NA	BL	/	
			DIBP	NA	BL	/	
7-11	DIODE	/	Cd	P	NA	/	PASS
			Pb	P		/	
			Hg	P		/	
			Cr	P		/	
			Br	P		/	
			DEHP	NA	BL	/	
			BBP	NA	BL	/	
			DBP	NA	BL	/	
			DIBP	NA	BL	/	
7-12	RESISTOR	/	Cd	P	NA	/	PASS
			Pb	P		/	
			Hg	P		/	
			Cr	P		/	
			Br	P		/	
			DEHP	NA	BL	/	
			BBP	NA	BL	/	
			DBP	NA	BL	/	
			DIBP	NA	BL	/	
7-13	SOLDER (SILVER METAL)	/	Cd	P	NA	/	PASS
			Pb	P		/	
			Hg	P		/	
			Cr	P		/	
			Br	NA		/	
			DEHP	NA	NA	/	
			BBP	NA	NA	/	
			DBP	NA	NA	/	
			DIBP	NA	NA	/	
7-14	PCB	/	Cd	P	NA	/	PASS
			Pb	P		/	
			Hg	P		/	
			Cr	P		/	
			Br	X		PBBs=ND PBDEs=ND	
			DEHP	NA	BL	/	
			BBP	NA	BL	/	
			DBP	NA	BL	/	



**XRF Screening and Chemical Confirmation Test Report**

Number: 210200323HZH-002

Part No.	Tested Components	Refer information	Restricted Substance	XRF Result	Screened Results (BLphthalates)	Chemical Confirmation Result	Conclusion on RoHS
			DIBP	NA	BL	/	
8	COVER (WHITE PLASTIC)	/	Cd	P	NA	/	PASS
			Pb	P		/	
			Hg	P		/	
			Cr	P		/	
			Br	X		PBBs=ND PBDEs=ND	
			DEHP	NA	BL	/	
			BBP	NA	BL	/	
			DBP	NA	BL	/	
			DIBP	NA	BL	/	
9	GLUE (WHITE NONMETAL)	/	Cd	P	NA	/	PASS
			Pb	P		/	
			Hg	P		/	
			Cr	P		/	
			Br	P		/	
			DEHP	NA	BL	/	
			BBP	NA	BL	/	
			DBP	NA	BL	/	
			DIBP	NA	BL	/	
10	LAMP						
10-1	LAMP (WHITE NONMETAL)	/	Cd	P	NA	/	PASS
			Pb	P		/	
			Hg	P		/	
			Cr	P		/	
			Br	P		/	
			DEHP	NA	BL	/	
			BBP	NA	BL	/	
			DBP	NA	BL	/	
			DIBP	NA	BL	/	
10-2	WIRE SLEEVE (WHITE NONMETAL)	/	Cd	P	NA	/	PASS
			Pb	P		/	
			Hg	P		/	
			Cr	P		/	
			Br	P		/	
			DEHP	NA	BL	/	
			BBP	NA	BL	/	
			DBP	NA	BL	/	
			DIBP	NA	BL	/	
10-3		/	Cd	P	NA	/	PASS



**XRF Screening and Chemical Confirmation Test Report**

Number: 210200323HZH-002

Part No.	Tested Components	Refer information	Restricted Substance	XRF Result	Screened Results (BLphthalate s)	Chemical Confirmation Result	Conclusion on RoHS
	WIRE (COPPER METAL)		Pb	P		/	
			Hg	P		/	
			Cr	P		/	
			Br	NA		/	
			DEHP	NA	NA	/	
			BBP	NA	NA	/	
			DBP	NA	NA	/	
			DIBP	NA	NA	/	
10-4	WIRE (SILVER METAL)	/	Cd	P	NA	/	PASS
			Pb	P		/	
			Hg	P		/	
			Cr	P		/	
			Br	NA	/		
			DEHP	NA	NA	/	
			BBP	NA	NA	/	
			DBP	NA	NA	/	
DIBP	NA	NA	/				
D1	END COVER						
D1-1	END COVER (SILVER METAL)	/	Cd	P	NA	/	PASS
			Pb	P		/	
			Hg	P		/	
			Cr	P		/	
			Br	NA	/		
			DEHP	NA	NA	/	
			BBP	NA	NA	/	
			DBP	NA	NA	/	
DIBP	NA	NA	/				
D1-2	PLUG PIN (GOLD METAL)	/	Cd	P	NA	/	PASS
			Pb	X		Pb=26140ppm #3	
			Hg	P		/	
			Cr	P		/	
			Br	NA	/		
			DEHP	NA	NA	/	
			BBP	NA	NA	/	
			DBP	NA	NA	/	
DIBP	NA	NA	/				
D1-3	INSULANT (BLACK PLASTIC)	/	Cd	P	NA	/	PASS
			Pb	P		/	
			Hg	P		/	

**XRF Screening and Chemical Confirmation Test Report**

Number: 210200323HZH-002

Part No.	Tested Components	Refer information	Restricted Substance	XRF Result	Screened Results (BLphthalates)	Chemical Confirmation Result	Conclusion on RoHS	
			Cr	P		/		
			Br	P		/		
			DEHP	NA		BL		/
			BBP	NA		BL		/
			DBP	NA		BL		/
			DIBP	NA		BL		/
D1-4	INSULANT (YELLOW NONMETAL)	/	Cd	P	NA	/	PASS	
			Pb	P		/		
			Hg	P		/		
			Cr	P		/		
			Br	P		/		
			DEHP	NA	BL	/		
			BBP	NA	BL	/		
			DBP	NA	BL	/		
			DIBP	NA	BL	/		
D2	COVER (WHITE PLASTIC)	/	Cd	P	NA	/	PASS	
			Pb	P		/		
			Hg	P		/		
			Cr	P		/		
			Br	X		PBBs=ND PBDEs=ND		
			DEHP	NA	BL	/		
			BBP	NA	BL	/		
			DBP	NA	BL	/		
			DIBP	NA	BL	/		
D3	END COVER							
D3-1	COVER (WHITE PLASTIC)	/	Cd	P	NA	/	PASS	
			Pb	P		/		
			Hg	P		/		
			Cr	P		/		
			Br	X		PBBs=ND PBDEs=ND		
			DEHP	NA	BL	/		
			BBP	NA	BL	/		
			DBP	NA	BL	/		
			DIBP	NA	BL	/		
D3-2	PLUG PIN (SILVER METAL)	/	Cd	P	NA	/	PASS	
			Pb	X		Pb=25580ppm #3		
			Hg	P		/		
			Cr	P		/		



**XRF Screening and Chemical Confirmation Test Report**

Number: 210200323HZH-002

Part No.	Tested Components	Refer information	Restricted Substance	XRF Result	Screened Results (BLphthalate s)	Chemical Confirmation Result	Conclusion on RoHS
			Br	NA		/	
			DEHP	NA	NA	/	
			BBP	NA	NA	/	
			DBP	NA	NA	/	
			DIBP	NA	NA	/	
D4	SHELL						
D4-1	SHELL (WHITE PLASTIC)	/	Cd	P	NA	/	PASS
			Pb	P		/	
			Hg	P		/	
			Cr	P		/	
			Br	X		PBBs=ND PBDEs=ND	
			DEHP	NA	BL	/	
			BBP	NA	BL	/	
			DBP	NA	BL	/	
			DIBP	NA	BL	/	
D4-2	SVREW (SILVER METAL)	/	Cd	P	NA	/	PASS
			Pb	P		/	
			Hg	P		/	
			Cr	P		/	
			Br	NA		/	
			DEHP	NA	NA	/	
			BBP	NA	NA	/	
			DBP	NA	NA	/	
			DIBP	NA	NA	/	
D5	COVERING (SILVER METAL)	/	Cd	P	NA	/	PASS
			Pb	P		/	
			Hg	P		/	
			Cr	P		/	
			Br	NA		/	
			DEHP	NA	NA	/	
			BBP	NA	NA	/	
			DBP	NA	NA	/	
			DIBP	NA	NA	/	
D6	LAMP TUBE						
D6-1	END COVER (WHITE PLASTIC)	/	Cd	P	NA	/	PASS
			Pb	P		/	
			Hg	P		/	
			Cr	P		/	



**XRF Screening and Chemical Confirmation Test Report**

Number: 210200323HZH-002

Part No.	Tested Components	Refer information	Restricted Substance	XRF Result	Screened Results (BLphthalates)	Chemical Confirmation Result	Conclusion on RoHS
			Br	X		PBBs=ND PBDEs=ND	
			DEHP	NA	BL	/	
			BBP	NA	BL	/	
			DBP	NA	BL	/	
			DIBP	NA	BL	/	
D6-2	LAMP TUBE (CLEAR NONMETAL)	/	Cd	P	NA	/	PASS
			Pb	P		/	
			Hg	P		/	
			Cr	P		/	
			Br	P		/	
			DEHP	NA	BL	/	
			BBP	NA	BL	/	
			DBP	NA	BL	/	
			DIBP	NA	BL	/	

Remark: P = Pass (Below the lower screening limit of table (B1))

X = Inconclusive result (Further chemical test was suggested (see table (B1).))

BL=Below the lower screening limit of table (B2) and pass

NA = Not applicable

ND = Not detected

ppm = Parts per million = mg/kg

\* = Failed item

Cr<sup>6+</sup>=Negative=The Cr (VI) concentration is less than 0.10 µg/cm<sup>2</sup>.The sample is Cr<sup>6+</sup>=Negative for Cr (VI).

Inconclusive = The Cr (VI) concentration is between 0.10 µg/cm<sup>2</sup> and 0.13 µg/cm<sup>2</sup>.The result is considered to be inconclusive. Unavoidable coating variations may influence the determination.

Positive = The sample is positive for Cr (VI) is based on visual comparison only. Sample solution is significantly more intense than the 0.13 µg/cm<sup>2</sup> equivalent comparison standard. No Colourimetric measurement was performed.

(#1) = The screened result was found in the region of inconclusive and further chemical test was suggested (see table A).

(#2) = Cr was detected above the screening limits and further chemical test was suggested (see table A).

(#3) = As claimed by the declaration submitted from the applicant, the Lead content of the component comes from Copper alloy only. According to EU RoHS Directive (2011/65/EU), Lead in Copper alloy containing up to 4% (40,000 mg/kg) Lead by weight can be exempted.

\*\*\*\*\*

To be continued

**XRF Screening and Chemical Confirmation Test Report**

Number: 210200323HZH-002

(B)

(B1) XRF Screening Limits in mg/kg for Regulated Elements in Various Matrices.

Element	Polymer materials	Metallic materials	Composite materials
Cd	$P \leq 70 < X < 130 \leq F$	$P \leq 70 < X < 130 \leq F$	$P \leq 70 < X < 150 \leq F$
Pb	$P \leq 700 < X < 1300 \leq F$	$P \leq 700 < X < 1300 \leq F$	$P \leq 500 < X < 1500 \leq F$
Hg	$P \leq 700 < X < 1300 \leq F$	$P \leq 700 < X < 1300 \leq F$	$P \leq 500 < X < 1500 \leq F$
Cr	$P \leq 700 < X$	$P \leq 700 < F$	$P \leq 500 < X$
Br	$P \leq 300 < X$	Not applicable	$P \leq 250 < X$

(B2) Preliminary screening test will be used for phthalates, if the results exceed the warning area in the following table, further chemical methods will be conducted to confirm the exact content by GC/MS.

Phthalates	Polymer
Bis(2-ethylhexyl)phthalate(DEHP)	$BL \leq 600 < X$
Butyl benzyl phthalate(BBP)	$BL \leq 600 < X$
Dibutyl phthalate(DBP)	$BL \leq 600 < X$
Diisobutyl phthalate(DIBP)	$BL \leq 600 < X$

\*\*\*\*\*

(C) Estimated detection limits in mg/kg for regulated elements in various matrices.

Element	Polymer materials	Metallic materials	Composite materials
Cd	50	70	70
Pb	100	200	200
Hg	100	200	200
Cr	100	200	200
Br	200	Not applicable	200

**Disclaimers:**

This XRF Screening and Chemical Confirmation Test Report is for reference purposes only. The applicant shall make its/his/her own judgment as to whether the information provided in this XRF Screening and Chemical Confirmation Test Report is sufficient for its/his/her purposes.

The results shown in this XRF Screening and Chemical Confirmation Test Report will differ based on various factors, including but not limited to, the sample size, thickness, area, surface flatness, equipment parameters and matrix effect (e.g. plastic, rubber, metal, glass, ceramic etc.). Further wet chemical pre-treatment with relevant chemical equipment analysis is required to obtain quantitative data.

\*\*\*\*\*

To be continued

**XRF Screening and Chemical Confirmation Test Report**

Number: 210200323HZH-002

(D) Chemical confirmation test methods:

Testing Item	Testing Method	Reporting Limit
Cadmium (Cd) Content	With reference to IEC 62321-5 Edition 1.0 : 2013, by acid digestion and determined by ICP - OES	2 mg/kg
Lead (Pb) Content	With reference to IEC 62321-5 Edition 1.0 : 2013, by acid digestion and determined by ICP - OES	2 mg/kg
Mercury (Hg) Content	With reference to IEC 62321-4 Edition 1.0 : 2013, by acid digestion and determined by ICP - OES	2 mg/kg
Chromium (VI) (Cr <sup>6+</sup> ) content (for non-metal)	With reference to IEC 62321-7-2 Edition 1.0 : 2017, by organic solvent dissolution or swell the sample matrix, followed by alkaline digestion and determined by UV-VIS Spectrophotometer.	10mg/kg
Chromium (VI) (Cr <sup>6+</sup> ) content (for metal)	With reference to IEC 62321-7-1 Edition 1.0: 2015, by boiling water extraction and determined by UV-VIS Spectrophotometer.	Positive(>0.13 µg/m <sup>2</sup> )/ Cr <sup>6+</sup> =Negative(<0.10 µg/m <sup>2</sup> ) Inconclusive(0.10--0.13 µg/m <sup>2</sup> )
Polybrominated Biphenyls (PBBs) & Polybrominated Diphenyl Ethers (PBDEs) Content	With reference to IEC 62321-6 edition 1.0:2015, by solvent extraction and determined by GC/MS and further HPLC confirmation when necessary	5 mg/kg
Phthalates(DEHP,BBP,DBP,DIBP) Content	With reference to IEC62321-8 : 2017, by solvent extraction and determined by GC/MS	100mg/kg

(E) RoHS requirement

Restricted substances	Limits
Cadmium (Cd)	0.01% (100 ppm)
Lead (Pb)	0.1% (1000 ppm)
Mercury (Hg)	0.1% (1000 ppm)
Chromium (VI) (Cr <sup>6+</sup> )	0.1% (1000 ppm)
Polybrominated biphenyls (PBBs)	0.1% (1000 ppm)
Polybrominated diphenyl ethers (PBDEs)	0.1% (1000 ppm)
Phthalates(DEHP, BBP, DBP, DIBP)	0.1% (1000 ppm)

The above limits were quoted from 2011/65/EU and (EU) 2015/863 for homogeneous material.

Date sample received: 2021-03-12

Testing period: 2021-03-12 to 2021-03-29

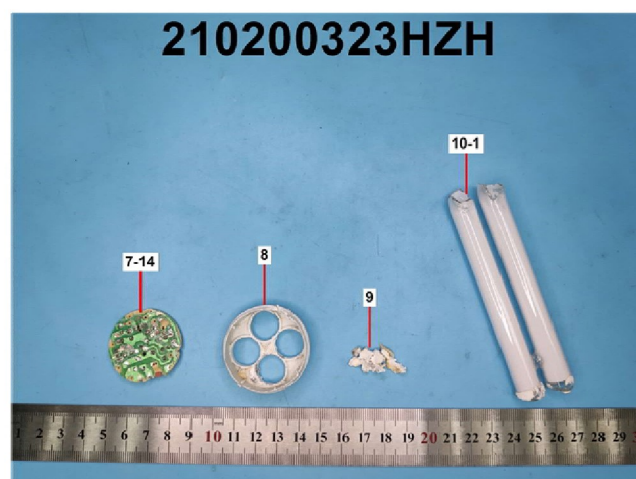
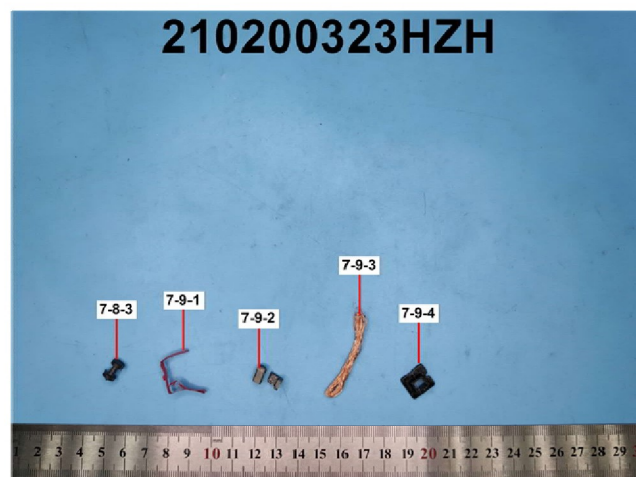
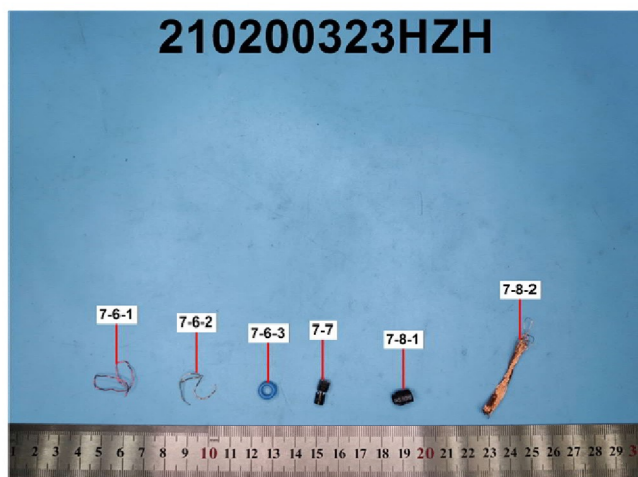
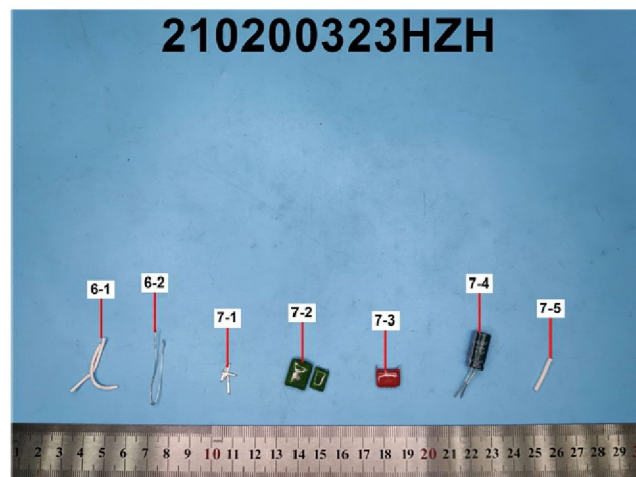
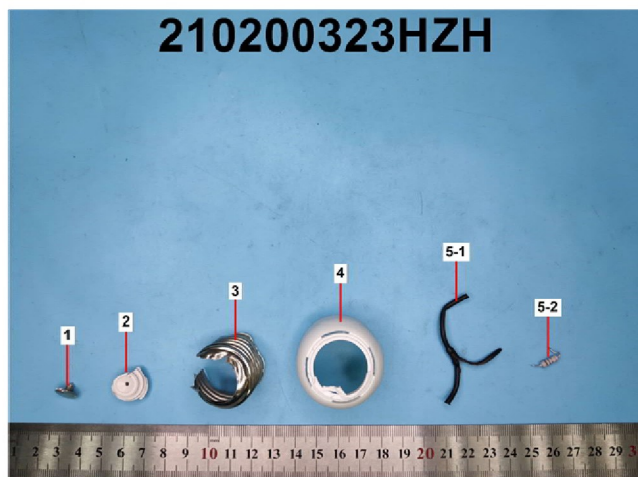
To be continued



## XRF Screening and Chemical Confirmation Test Report

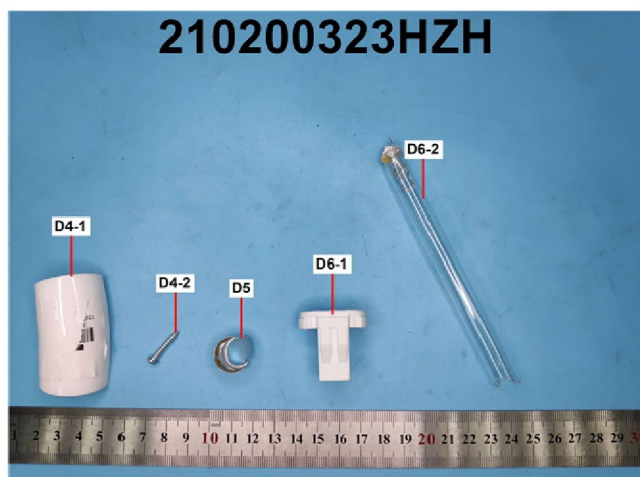
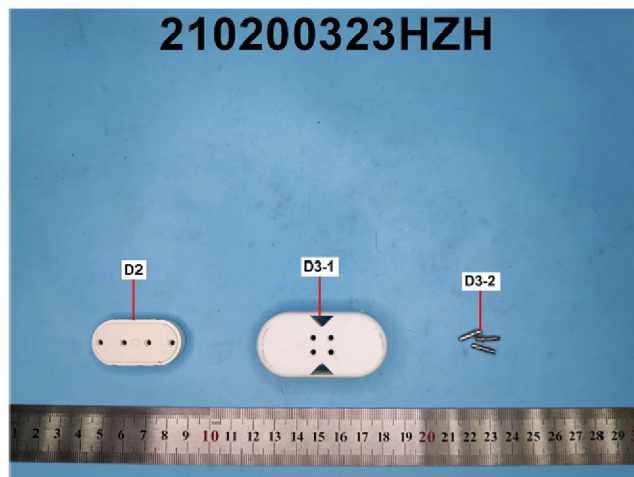
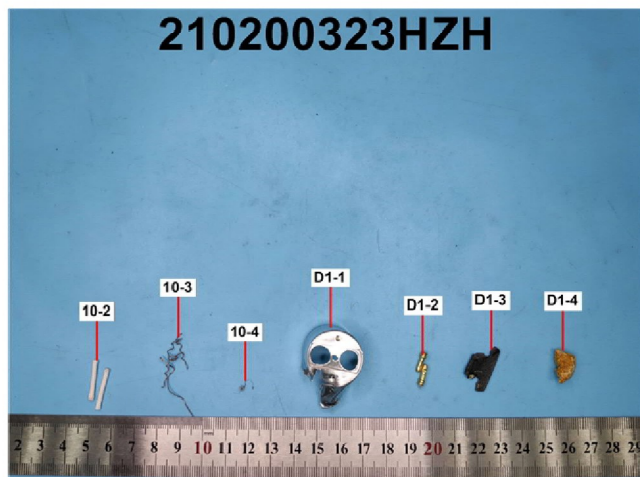
Number: 210200323HZH-002

### Sample disassembling Photo(s)



## XRF Screening and Chemical Confirmation Test Report

Number: 210200323HZH-002



End of this report

*This report is made solely on the basis of your instructions and/or information and materials supplied by you. It is not intended to be a recommendation for any particular course of action. Intertek does not accept a duty of care or any other responsibility to any person other than the Client in respect of this report and only accepts liability to the Client insofar as is expressly contained in the terms and conditions governing Intertek's provision of services to you. Intertek makes no warranties or representations either express or implied with respect to this report save as provided for in those terms and conditions. We have aimed to conduct the Review on a diligent and careful basis and we do not accept any liability to you for any loss arising out of or in connection with this report, in contract, tort, by statute or otherwise, except in the event of our gross negligence or wilful misconduct.*