

## Achieve a Best in Class Lockout Solution for Pipeline Maintenance

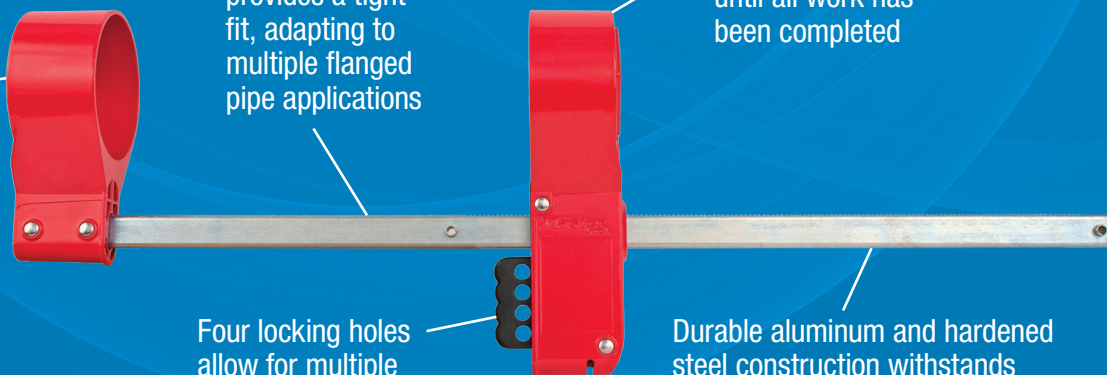
Three sizes available to cover and lock out nuts ranging from 3/4in (19mm) to 2-3/4in (69.9mm) diameter

Adjustable device provides a tight fit, adapting to multiple flanged pipe applications

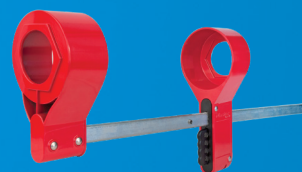
Device fully conceals flange bolts preventing access to the blind until all work has been completed

Four locking holes allow for multiple workers to lockout device at one time

Durable aluminum and hardened steel construction withstands conditions indoors and out



The Master Lock® Blind Flange Lockout Device is a Physical, Best Practice Solution for Pipeline Maintenance.



Model Number	S3922	S3923	S3924
Description	Blind Lockout Device, Small	Blind Lockout Device, Medium	Blind Lockout Device, Large
Recommended Nut Diameter	3/4in – 1-1/8in (19mm – 28.7mm)	1in – 1-7/8in (33.3mm – 47.8mm)	2in – 2-3/4in (52.3mm – 69.9mm)
Pipe Diameter Range	1/2in – 3in (12.7mm – 76.2mm)	3-1/2in – 12in (88.9mm – 304.8mm)	14in – 24in (355.6mm – 609.6mm)
Pipe Flange Width Range	1-1/2in – 5-5/8in (38.1mm – 143.3mm)	3-3/4in – 10-3/4in (95.3mm – 274.6mm)	7-3/4in – 17-7/8in (196.9mm – 447.8mm)
Material	Powder coated aluminum with hardened steel slide bar		
Operating Temperature	-40°F – 200°F (-40°C – 93.3°C)		
Compliance Testing	REACH, Prop 65		
Individual Packaging	1 Unit, Commercial Bagged		
Each UPC	071649274374	071649274381	071649274398
Master Carton QTY	6 Units		
Master Carton UPC	10071649274371	10071649274388	10071649274395

## Additional Products

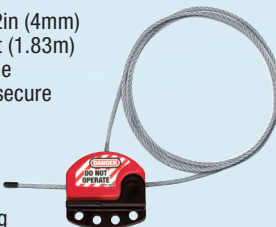
### Confined Space Covers

- Innovative design is easy to use and applies in seconds
- Effective barrier prevents unauthorized entry from personnel, environment
- Ventilated cover prevents entry but allows airflow
- Silicone treated material stands up to harsh environments and chemicals
- Can be easily cleaned and stored for reuse



### S806 Adjustable Locking Cable

- Patented 5/32in (4mm) diameter x 6ft (1.83m) pull-tight cable adjusts for a secure fit every time
- Also available from 2 to 50 ft (61cm to 15.2m) long
- Tough, flexible multi-stranded steel cable is insulated with a clear plastic coating (PVC free)
- Tough, lightweight thermoplastic body withstands chemicals



### 484 Rotating Gate Valve Lockout

- Surrounds the valve operating handle to protect against accidental valve opening
- Tough, lightweight dielectric thermoplastic bodies withstand chemicals
- Unique, patented rotating design allows for easier installation in tight spaces



Contact your Master Lock representative or visit our website for more information on our complete line of safety lockout devices.