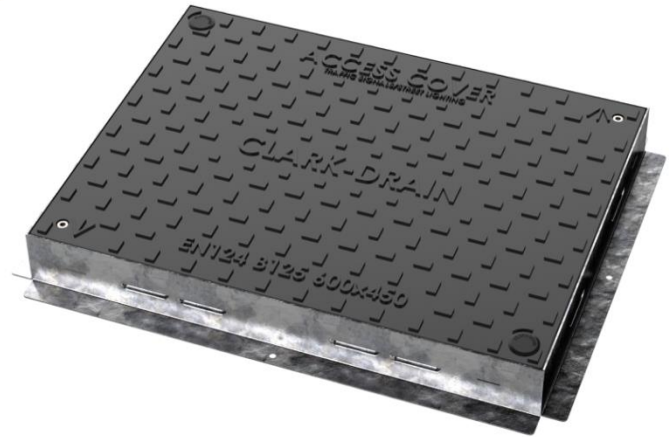




Technical Specification/ Product Datasheet



Specific Product Code/s: **CD 261/SF CD 262/SF CD 263/SF CD 264/SF CD 265/SF**

Product Group: Composite Manhole Covers

Sub-Category: B125 Solid-Top Manhole Covers for Pavements & Driveways.

Material Grade/s: Cover = Sheet Moulded Compound
Frame = Mild Steel to BS EN 1449:1991/EN 10025:2004
Galvanising to BS EN 1461:2009

| Basic Dimensions (mm): | Clear-Opening | Overall Size | Depth |
|------------------------|---------------|--------------|-------|
| CD 261/SF | 300 x 300 | 362 x 362 | 68 |
| CD 262/SF | 450 x 300 | 512 x 362 | 68 |
| CD 263/SF | 450 x 450 | 512 x 512 | 68 |
| CD 264/SF | 600 x 450 | 662 x 512 | 68 |
| CD 265/SF | 600 x 600 | 662 x 662 | 68 |

| Weight (kgs): | Overall | Cover |
|---------------|---------|-------|
| CD 261/SF | 6 | 3.5 |
| CD 262/SF | 8 | 5.5 |
| CD 263/SF | 10.5 | 7.5 |
| CD 264/SF | 13 | 10 |
| CD 265/SF | 17 | 13 |

| Frame Pressure Bearing Area (N/mm ²): | CD 261/SF | CD 262/SF | CD 263/SF | CD 264/SF | CD 265/SF |
|---|-----------|-----------|-----------|-----------|-----------|
| | 3.9 | 3.1 | 2.6 | 2.2 | 2.0 |

Load Rating Classification: B125 (12.5 Tonnes)

Polished Skid-Resistance Value (PSRV): 60

- Features:
- Tested to BS EN 124-1:2015 Clauses 4.1, 4.2, 6.2, 6.3, 6.4, 6.5, 6.6, 6.7, 6.10, 6.13, 6.15, 6.16, 7.1, 7.2 and 7.3 by BSI
 - Integral lifting key holes (to suit CD 553 or CD 553L lifting keys, available separately) with cover-caps to reduce debris ingress.
 - Fully galvanised steel frame.
 - Non-ferrous composite cover, resistant to chemicals, deformation, rust and corrosion.
 - Supplied fitted with long-life stainless steel locking screws
 - Frame skirt provided with fixing holes to securely attach frame to chamber.
 - Perfect partners for Clark-Drain B125 polypropylene chambers.
 - All covers marked with "Traffic Signals / Street Lighting".

Date Issued: 14/04/2021