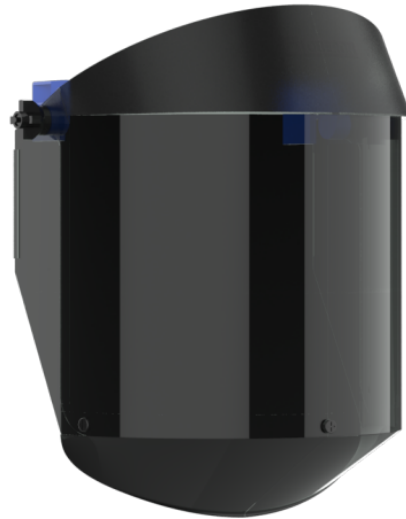


TECHNICAL SPECIFICATION



AFP-25 Helmet Mounted Faceshield

AFP-25 Helmet Mounted Faceshield / AFF122-440-408



DESCRIPTION

The AFP-25 has been designed to provide the ultimate in industrial-grade arc flash eye and face protection. In collaboration with arc risk specialist manufacturers Oberon, the faceshield has been tested and rated on the JSP EVO@5 helmet range, achieving GS-ET-29 arc class 2 and maximum permissible ATPV rating of 25cal/cm² under ASTM F2178. Simple to fit to new or existing EVO@5 range helmet, with an optional weight balance system available to facilitate one-handed stowing for improved working clearance.

OPTIONS

AFP-25 Helmet Mounted Faceshield (AFF122-440-408)

AFP-25 Helmet Mounted Faceshield with weight balancing system (AFF132-440-408)

SAFETY STANDARDS

EN 166 • EN 170 • ANSI Z87. 1 • GS-ET-29 • ASTM F2178-12



SPECIFICATIONS



RADIATION PROTECTION BREAKDOWN filtering effect
Scale Number
2C



LIGHT TRANSMISSION BREAKDOWN Lens Shade number
2



Manufacturer's Trademark
JSP Dagger / Oberon Company Logo



Optical Class (1 – Class 1 – High quality for regular use. 2 – Class 2 – Medium quality for occasional use. 3 – Class 3 – Low quality for exceptional use)
1



Medium Energy Impact resists a 6 mm, 0.86g ball @ 120 m/s Maximum protection for goggles.
B



Protection Against Short Circuit Electric Arc
8



Resistance to Surface Damage by Fine Particles (optional)
K



Resistance to fogging (optional)
Yes, But not to "N"



Visor Length
340mm



Material
Polycarbonate Visor



Recyclable
Yes

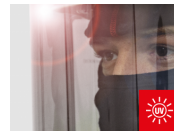
Product Weight
465G

FEATURES



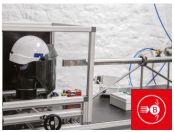
Thermal Performance

When tested in accordance with ASTM F2178, the AFP-25 faceshield achieved the maximum permissible Arc Thermal Performance Value (ATPV) of 25cal/cm².



UV Filtering

Faceshield filters harmful optical radiation, including ultraviolet light, to protect against ocular damage such as photokeratitis and blindness.



Impact Resistance

The AFP-25 faceshield is rated B, offering medium energy impact protection, for use against projected particles and debris.



Maximum Coverage

Deep chinguard and side shields provide maximum facial coverage, with inclined browguard designed to deflect energy upwards and away from the helmet surface.



EVO@5 Range Compatible

Compatible with the entire JSP EVO@5 helmet range, including EVO@5 DualSwitch™ and EVO@5 E-Xtra, enabling a wide choice of helmet features and performance options.

APPLICATIONS

General guidance only and should not be considered a substitute for a full risk assessment

Agricultural

Construction and Infrastructure

Facilities Management

Manufacturing

Maritime

Oil, Gas and Chemical Companies

Rail and Tunnelling

Renewable, Wind and Solar Energy

Utilities Contractors

RANGE



DOWNLOADS

[Image Pack \(ZIP\)](#)

[doc-afp-25-arc-faceshield.pdf \(PDF\)](#)

