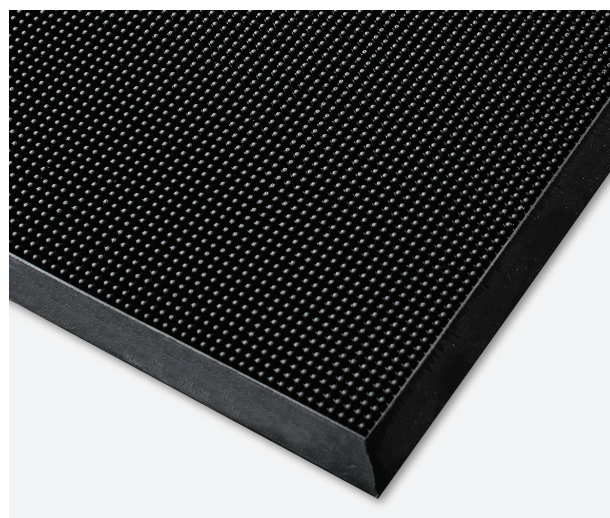


# Fingerbrush

Fingerbrush is an external use, heavy-duty high performance entrance rubber mat designed to withstand extreme weather conditions and the heaviest of foot traffic. Made of hundreds of flexible rubber bristles that help to remove dirt and clean shoes fast. The Fingerbrush also has anti-trip bevels and an anti-slip underside to prevent mat movement.

## Features

- ◆ **Typical applications:** Multi use hard wearing entrance mat suitable for schools, offices, commercial establishments, retail, residential, industrial and on construction sites.
- ◆ **Material:** 100% natural rubber.
- ◆ **Cleaning:** Use a high pressure hose (not exceeding 60psi) to remove dirt and debris on the mat. For best results use a mild detergent.
- ◆ **Sustainability:** Recyclable material. REACH compliant.
- ◆ **Warranty:** Lifetime.



Black only



For our icon glossary please visit: [bluediamond.uk.com/glossary](https://bluediamond.uk.com/glossary)  
For more information about this product or, to place an order [click here](#)

Code	Metric	Imperial	Thickness	Weight	Colour
FB2432	60cm x 80cm	2' x 3'	15mm	4.7kg	Black
FB3239	80cm x 100cm	3' x 3'	15mm	7.6kg	Black
FB3672	90cm x 180cm	3' x 6'	15mm	16kg	Black

Please note, the thickness can be +/- 0.5mm

Please note, all Imperial sizes have either been rounded up or down to the nearest whole number

# Fingerbrush

## Technical Specification

Slip resistant:	Excellent slip resistance to level 3
Anti-fatigue:	Great anti-fatigue properties, resistant to level 2
Wear resistant:	Excellent wear resistance to level 3, suitable for heavy footfall
Water absorbent:	Great water absorbency to level 2
Crush resistant:	Great crush resistance to level 2
Soil resistant:	Great resistance to soiling and stains to level 2
Disability friendly:	Yes, the mats have ramped edges making them suitable for wheelchair users
Dry area:	Yes
Wet area:	Yes
Environment:	Suitable for indoor and outdoor use
Product testing:	Slip resistance 30 BPN, according to ASTM E303
Sustainability:	<ul style="list-style-type: none"><li>◆ Recyclable material</li><li>◆ REACH (Registration, Evaluation, Authorisation and Restrictions of Chemicals)</li></ul>
Temperature resistance:	-30°C to +50°C
Cleaning:	Use a high pressure hose (not exceeding 60psi) to remove dirt and debris on the mat. For best results use a mild detergent. We also recommend not to use steam, degreasers or caustic chemicals, or mechanically scrub the mats