

# TECHNICAL SPECIFICATION



## Sonis®2 Ear Defenders

Extra Visibility Yellow / AEB020-0B1-C00



### DESCRIPTION

The Sonis® range has been stylishly designed with a traffic light colour code for easy identification. Materials have been chosen for both performance and comfort over extended periods of use, with careful design ensuring a small number of key components for easy maintenance.

Medium attenuation

### OPTIONS

Dark Grey, Yellow (AEB020-0AY-900)

**Extra Visibility Yellow (AEB020-0B1-C00)**





White / Yellow (AEB020-0A2-D01)

### SAFETY STANDARDS

EN 352-1



## SPECIFICATIONS

 Mounting Headband	 SNR 31 dB
Cup Material ABS	Head Band Material TPE
Adjustable Yes	Hygiene Hygiene Kit
 BSI Kitemark Yes	 JSPCheck Yes
 Recyclable Yes	 Product Weight 256g
Head Band Material Padded Textile	

## FEATURES



### Performance

The Sonis® range of ear defenders have been designed by the JSP R&D team. Working with a leading UK acoustic engineering research facility they have developed an ear defender range that peaks at an unbeaten 37 SNR.



### Customisation

Sonis® cups can be coloured to meet a corporate identity. They can also be printed with a company logo for improved brand recognition and to discourage theft. MOQ's apply.



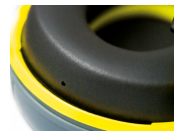
### Hygienic

The headband is manufactured from TPE, making it easy to wipe clean. The sealing rings are easy to replace. Hygiene kits are available for each model.



### Extra Visibility

The Sonis® range is available with extra visibility cups and a reflective headband for added low light protection.



### Comfort

The over-moulded headband has a built-in comfort area with ventilation. The headband force and the cushion surface area work together to provide optimum cushion pressure and comfort.



### Adjustable Steel Arms

To facilitate even distribution of pressure the wearer can tilt and adjust the position of the earcup for optimum comfort and fit.



### Extra Visibility option

The Sonis® range is available with extra visibility cups and a reflective headband for added low light protection.



## LOGO

Sides

## RANGE

SONIS 2

## VIDEOS

-  [www.youtube.com/watch?v=lwV07zfa1Z4](http://www.youtube.com/watch?v=lwV07zfa1Z4)
-  [www.youtube.com/watch?v=AycQ2vqifWE](http://www.youtube.com/watch?v=AycQ2vqifWE)

## DOWNLOADS

-  [Image Pack \(ZIP\)](#)
-  [doc-sonis2-over-the-head-ear-muff.pdf \(PDF\)](#)