

# Guide to Assembly & Usage

## newpo Industrial Workbench 300kg

### Information

If in doubt, contact the supplier

- Read this guide thoroughly before commencing assembly and retain for future reference
- Before commencing assembly, unpack carefully and check that all components ordered are included
- Assembly should be undertaken by a minimum of two competent people
- Tools – Small rubber mallet, flat-bladed screwdriver

### Caution

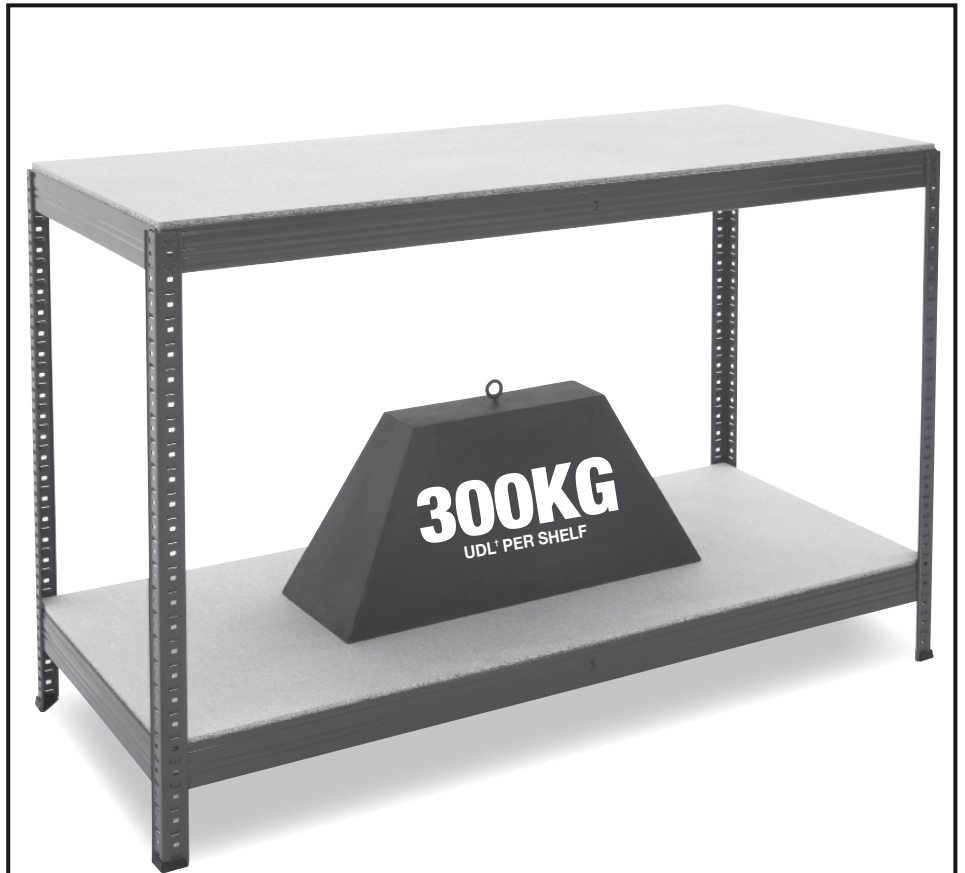
During assembly, ensure to:

- Take care during assembly and in use, particularly when lifting or stretching & when using tools
- Wear appropriate safety clothing – protective gloves and footwear are recommended
- Assemble & locate for use on a suitable level floor surface. Allow adequate working space
- Dispose of packaging materials responsibly

### Warning

Rules for the safe use of shelving:

- Ensure these instructions are retained for reference and that users are aware of the rules for safe use
- Never climb on the structure or stand on the shelving
- Do not lean or support ladders, steps, or other objects against shelving
- Do not use in damp or wet conditions
- Load heavy items on the lower shelves & lighter items on the higher shelves
- Ensure that the maximum load carrying capacities are not exceeded
- Please refer to the loading information supplied for details



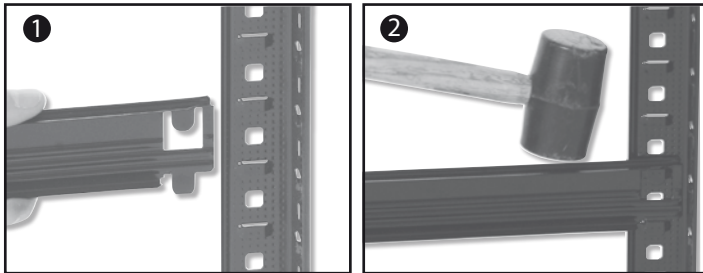
### COMPONENT CHECK LIST

Component	Quantity
Upright	4
Front & Back Beam	4
Side Beam	4
Centre Support	1200mm/ 1400mm = 2 1800mm = 4
Chipboard or melamine decks	2
Feet	4

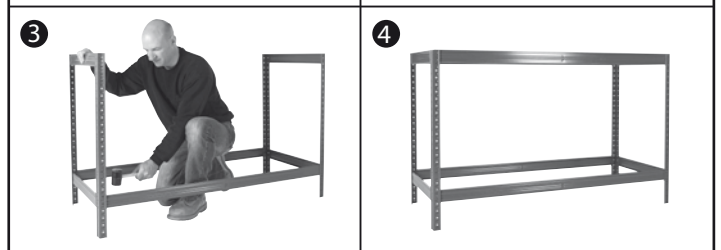
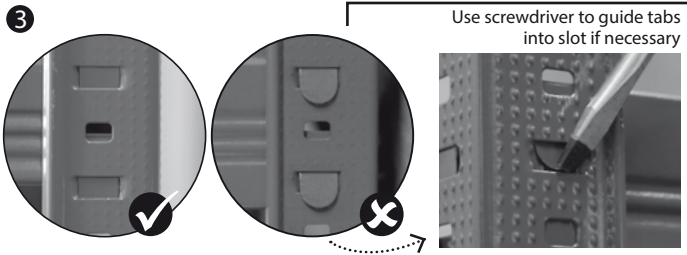
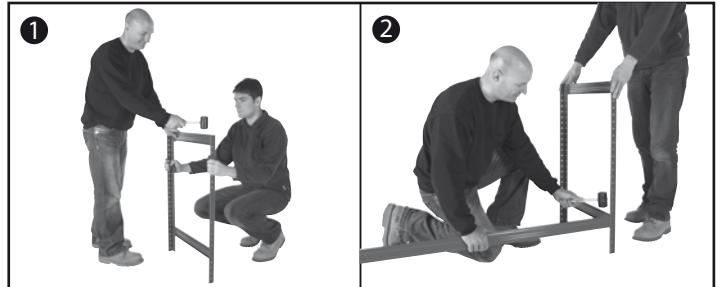
If you have any missing components please take note of the part name, and contact your supplier

# newpo Industrial Workbench 300kg Assembly

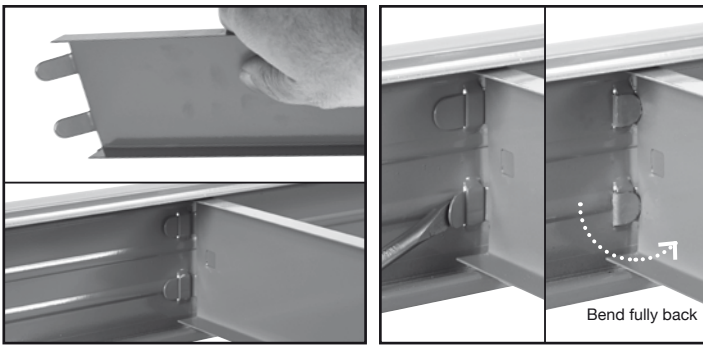
1. Slot first short beam into post. Tap into place with rubber mallet.



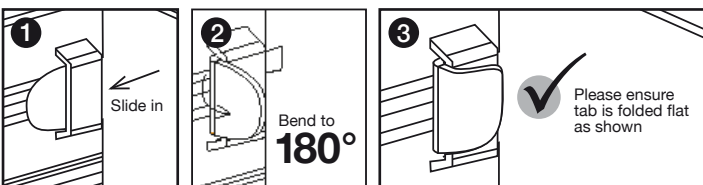
2. Assemble end frames with short beams & join with long front & back beams.



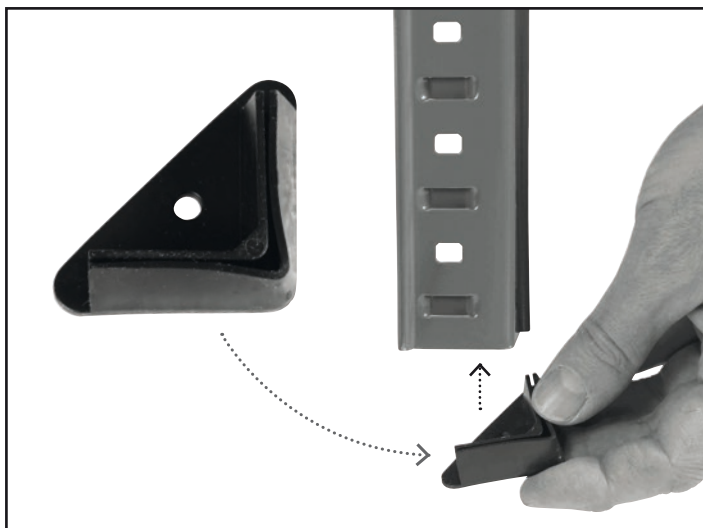
3. Bend centre support ends at right angles. Slot into long beams.



4. Insert decks onto steel frame.



5. Push plastic protective feet onto each post.



## Loading information

### Newpo Industrial Workbench 300kg

For any other layouts, please refer to your supplier for detailed loading capacities

#### Shelf load capacities

Maximum permitted shelf capacities are based on UDL\*. Please note that the bay capacity may limit the maximum load per shelf.

**IF YOU ARE IN ANY DOUBT REGARDING LOAD CAPACITIES, PLEASE CONTACT YOUR SUPPLIER**

\*UDL = Uniformly Distributed Load

Newpo Industrial Workbench 300kg	
Maximum load	Weight in kg
Per Shelf	300kg
Per Bench	600kg