

FIRECHIEF KITCHEN STOVE GUARD

FIRECHIEF®
making the world a safer place

MODEL:
FSW1

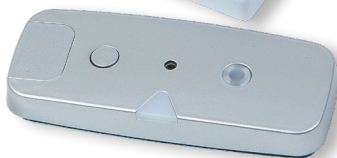


Features

- Stops fires when cooking long before they can start
- Creates a safer home for all – especially the elderly and vulnerable
- Designed for easy installation on electric cookers
- Intelligent heat sensor activates cooker switch when pre-fire conditions are detected
- Automatic fault diagnosis – no monthly testing
- Exceeds requirements of Stove Guard Standard EN 50615
- Unobtrusive, slimline sensor design
- Cost-effective and safer alternative to domestic hob fire suppression systems



FSW1 (SGK5010)
140-0002



INTELLIGENT
FIRE PREVENTION



LOW
MAINTENANCE



AUTO POWER
SHUT-OFF



EXTRA LONG
WARRANTY



FIRECHIEF KITCHEN STOVE GUARD

FIRECHIEF®
making the world a safer place

Next generation fire protection is about stopping fires before they start.

On average, cooking causes over a half of all accidental house fires in the OECD countries. A new risk factor adding to the fire scenario is synthetic interior and furniture materials which cause the fire to engulf the room 10 times faster than previously, when more traditional, natural materials were in use. This reduced escape time underlines the need for fire-preventing technology that **stops the fire before it starts**.

Innohome's Stove Guard includes an Intelligent Heat Sensor that is attached above the cooker and a Control Unit that cuts off the cooker power supply. It reacts to cooktop fire risk indicators earlier than any other cooker safety device, helping to dramatically reduce the number of accidental house fires.

World's most advanced heat sensor technology

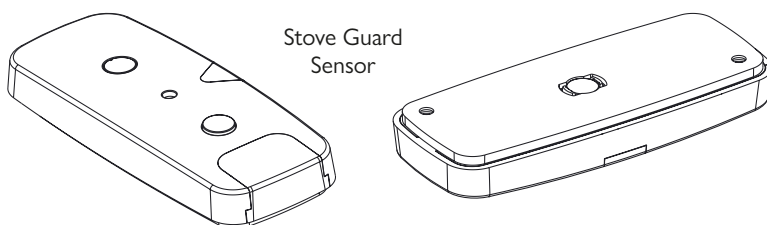
- All-round protection that exceeds the requirements of the EN 50615 Stove Guard standard and fulfils the requirements for all types of installations (cooker hood, wall, ceiling)
- Includes two types of heat sensors with unique learning function. Measures excessive temperatures, rate of temperature change and ambient temperature

Easy to use

Works silently in the background and can also be used easily by special user groups

Flexibility for all needs

Feature profiling based on user group and cooker type - the Stove Guard can easily be adapted to the needs of special user groups. Furthermore, it offers additional features for basic, mechanical cookers with no in-built safety features.



Model: FSW1 Code: 140-0002



**PROFESSIONAL
INSTALLATION
REQUIRED**

For more information contact: Firechief Global, 3 Lands End Way, Oakham, Rutland, UK, LE15 6RB | Imported into EU by: Sentura Group (Ireland) Ltd, Joyce House, 21-23 Holles Street, Dublin 2, Ireland

MODEL: FSW1



Specifications

- Alarm signal 80 dB@ 1 m / Silent alarm
- Extremely low energy use (approx 1 W)
- Sparkless electric switch
- RF 433 Mhz, PT2262 / Factory paired
- Voltage 230-400 V
- Halogen free and fire rated plastic, flammability rating V-0 (Intelligent Heat Sensor)
- Fully patented design
- Fulfils EN 50615 Stove Guard standard requirements (VTT Expert Services)
- Made in the EU
- Manufacturer part number: SGK5010
- Single unit carton dims: H28cm L18cm W 8.5cm, W=0.756kg
- Outer carton quantity: 16
- Pallet quantity: 256